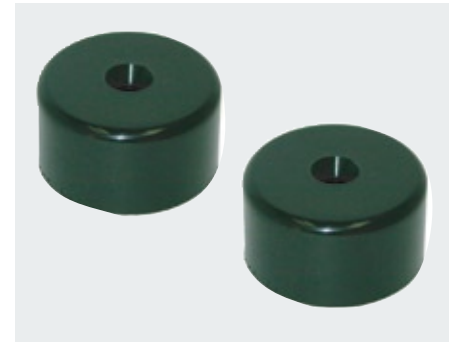
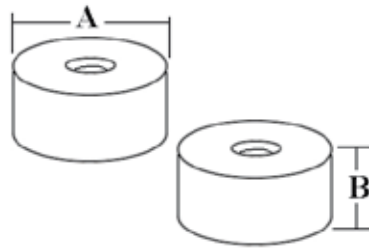


# ACCESS HARDWARE

## CENTER MAGNETIC DOOR HOLDER

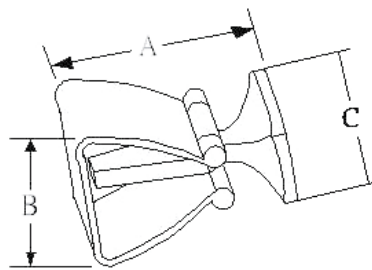
- Nylon
- Nylon coated magnet with center fastener



Part No	Color	Mag. Size	A mm	B mm	Holding Power
M5-71-122-2	Black	30x15 / 30x15	37(1 1/2")	20(3/4")	9Kgs
M5-71-222-2	White	30x15 / 30x15	37(1 1/2")	20(3/4")	9Kgs
M5-71-12W-2	Black	30x15 / 30x10	37(1 1/2")	20(3/4") 15(5/8")	5Kgs
M5-71-22W-2	White	30x15 / 30x10	37(1 1/2")	20(3/4") 15(5/8")	5Kgs

## DOOR HOLDER

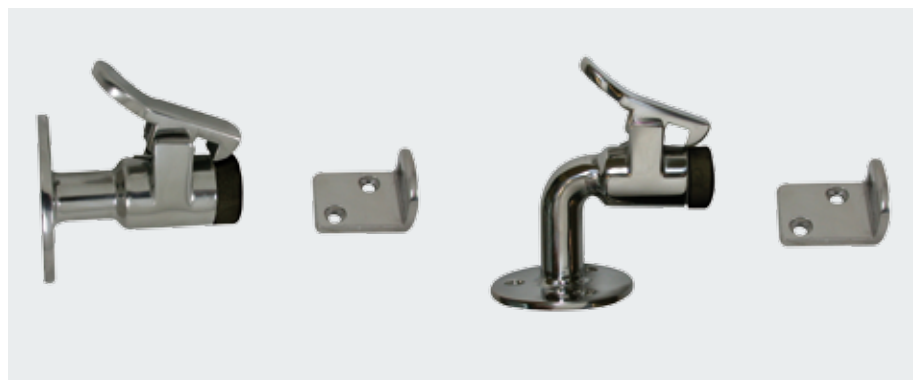
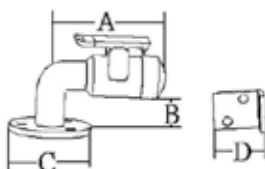
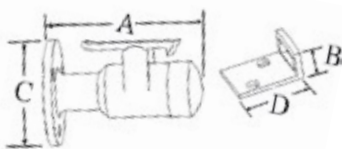
- 316 stainless steel
- Low friction spring roller bearing style



Part No	A mm	B mm	C mm
M5-10-251-8	41(1 5/8")	35(1 3/8")	41(1 5/8")
M5-10-252-8	29(1 1/8")	20(3/4")	29(1 1/8")

## DOOR STOP CATCH

- 316 stainless steel
- Rubber bumper stop to minimize noise



Part No	Model	A mm	B mm	C mm	D mm
M5-10-261-8	Horizontal	61 (2 1/2")	17 (11/16")	50 (2")	30 (1 3/16")
M5-10-262-8	Horizontal	85 (3 3/8")	17 (11/16")	50 (2")	30 (1 3/16")
M5-10-263-8	Vertical	49 (1 15/16")	29 (1 1/8")	50 (2")	30 (1 3/16")