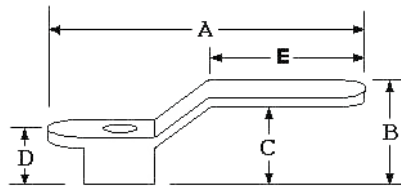


ACCESS HARDWARE

EMERGENCY ESCAPE HANDLE

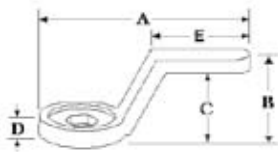
- 316 stainless steel
- Activation instruction on handle
- Fits all Southco T-handle compression latches (Latches on J9 and J10)



Part No	A mm	B mm	C mm	D mm	E mm
M5-C-101-8	112 (4 3/8")	35 (1 3/8")	25 (1")	17 (11/16")	58 (2 1/4")
M5-C-905-8	Emergency Release Handle Pin (Included)				

CASTED LATCH CAM

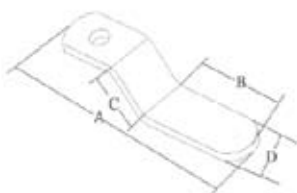
- 316 stainless steel
- Heavy-duty cast pawls available when extra strength is required
- Fits all Southco T-handle compression latches



Part No	Model	A mm	B mm	C mm	D mm	E mm
M5-C-201-8	Standard	83 (3 1/4")	25 (1")	21 (7/8")	7.8 (.31")	48 (1 7/8")
M5-C-202-8	Standard	69 (2 3/4")	25 (1")	21 (7/8")	9 (3/8")	32 (1 1/4")
M5-C-203-8	90°	69 (2 3/4")	25 (1")	21 (7/8")	9 (3/8")	32 (1 1/4")
M5-C-204-8	Casted Cam	102 (4")	25 (1")	21 (7/8")	8 (5/16")	76 (3")
M5-C-205-8	Casted Cam	102 (4")	14 (9/16")	13 (1/2")	8 (5/16")	32 (1 1/4")
M5-C-210-8	Casted Cam	89 (3 1/2")	38 (1 1/2")	51 (2")	30 (1 3/16")	NA

D-HANDLE CAST CAMS

- 316 Stainless steel
- Fits all D-handle latches



Part No	A mm	B mm	C mm	D mm	E mm
M5-C-207-8	73 (2 7/8")	15 (3/5")	16 (5/8")	10 (2/5")	6 (1/4")
M5-C-208-8	59 (2 1/3")	-	-	10 (2/5")	6 (1/4")
M5-C-209-8	13 (1 1/2")	-	-	10 (2/5")	6 (1/4")

STAMPED LATCH CAM

- 304 stainless steel
- Optional pawl to fit the Southco "T" handle latches



Part No		A mm	B mm	C mm	D mm
M5-C-151-8		57 (2-1/4")	24 (1")	33 (1-5/16")	30 (1-3/16")
M5-C-152-8		64 (2-1/2")	24 (1")	40 (1-1/2")	30 (1-3/16")
M5-C-153-8		91 (3-1/2")	39 (1-1/2")	52 (2")	30 (1-3/16")
M5-C-154-8	Stamped Latch Pawl	69 (2 3/4")	18 (7/10")	3 (1/8")	9 (23/64")
M5-C-155-8		126 (5")	60 (2 3/8")	26 (1")	32 (1 1/4")