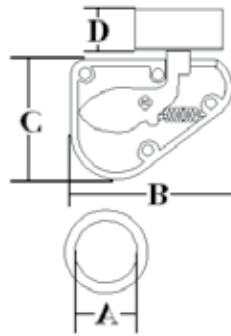


ACCESS HARDWARE

MAGNETIC CABINET LATCH - RING STYLE

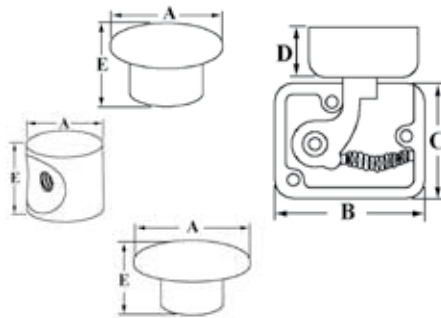
- 316 stainless steel and nylon
- Simple operation - insert finger into stainless steel ring hole and pull to open
- Suitable for both cabinets and drawers
- Low closing force required.



Part No	Model	A mm	B mm	C mm	D mm
M5-73-100-8	Right	25 (1")	70 (2 3/4")	53 (2")	16 (5/8")
M5-73-200-8	Left	25 (1")	70 (2 3/4")	53 (2")	16 (5/8")

MAGNETIC CABINET LATCH - KNOB STYLE

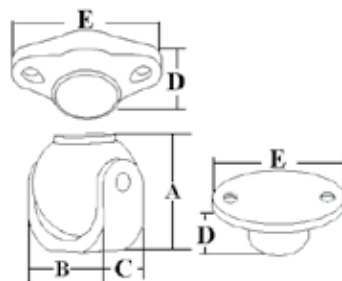
- 316 stainless steel and nylon
- Turn knob to open
- Low closing force required
- Three knob styles available – round, oval and finger
- Suitable for both cabinets and drawers



Part No	Knob	A mm	B mm	C mm	D mm	E mm
M5-74-100-8	Round	23 (7/8")	48 (1 7/8")	37 (1 1/2")	16 (5/8")	14 (9/16")
M5-74-200-8	Finger	20 (13/16")	48 (1 7/8")	37 (1 1/2")	16 (5/8")	18 (11/16")
M5-74-300-8	Oval	28 (1 1/8")	48 (1 7/8")	37 (1 1/2")	16 (5/8")	14 (9/16")

MAGNETIC DOOR & WINDOW HOLDER - STAINLESS STEEL

- 316 stainless steel
- Holder can be adjusted to any desired angle
- Magnet shrouded in stainless steel to withstand the marine environment
- Available with various holding power

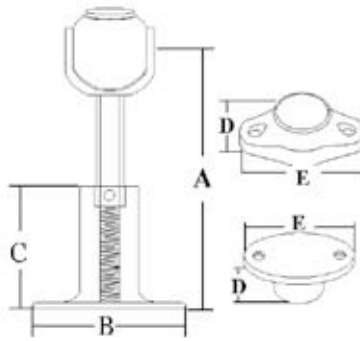


Part No	Mag. Size		A mm	B mm	C mm	D mm	E mm	Holding Power
	Ball	Strike						
M5-70-051-8	20x15	Proud 20x10	34 (1 5/16")	34 (1 5/16")	19 (3/4")	15 (19/32")	46 (1 13/16")	3.5Kgs
M5-70-052-8	20x15	Proud 30x15	34 (1 5/16")	34 (1 5/16")	19 (3/4")	19 (3/4")	70 (2 3/4")	5.4Kgs
M5-70-054-8	20x15	Flush 30x15	34 (1 5/16")	34 (1 5/16")	19 (3/4")	19 (3/4")	57 (2 1/8")	5.4Kgs
M5-70-072-8	30x15	Proud 30x15	48 (1 29/32")	48 (1 29/32")	27 (1 3/32")	19 (3/4")	70 (2 3/4")	10.6Kgs
M5-70-053-8	20x15	Flush 20x10	34 (1 5/16")	34 (1 5/16")	19 (3/4")	13 (9/16)	57 (2 3/16)	3.8Kgs

ACCESS HARDWARE

MAGNETIC DOOR HOLDER - ADJUSTABLE

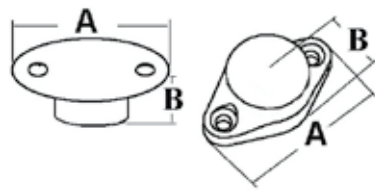
- 316 stainless steel
- Holder can be adjusted to any desired angle
- Magnets shrouded in stainless steel to withstand the marine environment
- Available with various holding power



Part No	Mag. Size		A-Max	A-Min	B mm	C mm	D mm	E mm	Holding Power
	Ball	Strike							
M5-72-081-8	20x20	Proud 20x10	89 (3 1/2")	60 (2 1/2")	51 (2")	39 (1 9/16")	15 (9/16")	46 (1 7/8")	4Kgs
M5-72-082-8	20x20	Proud 30x15	89 (3 1/2")	60 (2 1/2")	51 (2")	39 (1 9/16")	19 (3/4")	70 (2 7/8")	5.5Kgs
M5-72-072-8	30x15	Proud 30x15	95 (3 5/8")	63 (2 3/8")	51 (2")	39 (1 9/16")	19 (3/4")	70 (2 7/8")	10.6Kgs
M5-72-084-8	20x20	Flush 30x15	101 (3 3/4")	75 (2 3/4")	51 (2")	39 (1 9/16")	19 (3/4")	57 (2 3/16")	4.5Kgs
M5-72-083-8	20x20	Flush 20x10	101 (3 3/4")	75 (2 3/4")	51 (2")	39 (1 9/16")	13 (9/16")	57 (2 3/16")	4.2Kgs

MAGNETIC DOOR HOLDER - STAINLESS STEEL

- 316 stainless steel
- Magnets shrouded in stainless steel to withstand the marine environment
- Suitable for cabinets, transom doors and smaller doors
- Available in various holding power

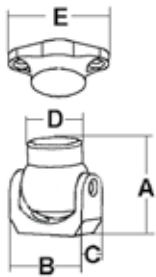


Part No	Mag. Size	A mm	B mm	Holding Power
M5-70-014-8	Proud 20x10 Flush 30x15	46-57 (1 7/8" - 2 3/16")	15-19 (9/16" - 3/4")	3.8Kgs
M5-70-013-8	Proud 20x10 Flush 20x10	46-57 (1 7/8" - 2 3/16")	15-13 (9/16" - 9/16")	3.5Kgs
M5-70-012-8	Proud 20x10 Proud 30x15	46-70 (1 7/8" - 2 7/8")	15-19 (9/16" - 3/4")	3.2Kgs
M5-70-022-8	Proud 30x15 Proud 30x15	70 (2 7/8")	19 (3/4")	10.7Kgs
M5-70-033-8	Flush 20x10 Flush 20x10	57 (2 3/16")	13 (9/16")	3.8Kgs
M5-70-044-8	Flush 30x15 Flush 30x15	57 (2 3/16")	19 (3/4")	10.7Kgs
M5-70-034-8	Flush 20x10 Flush 30x15	57 (2 3/16")	13-19 (9/16" - 3/4")	4.4Kgs
M5-70-099-8	Flush 30x7 Flush 30x7	57 (2 3/16")	13-19 (9/16" - 3/4")	3.5Kgs

ACCESS HARDWARE

MAGNETIC DOOR & WINDOW HOLDER - NYLON

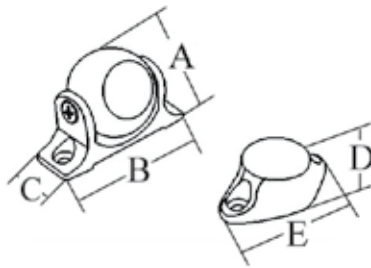
- Nylon
- Holder can be adjusted to any desired angle
- Encapsulated magnets for marine applications



Part No	Color	Mag. Size		A mm	B mm	C mm	D mm	E mm	Holding Power
		Ball	Proud						
M5-70-156-2	Black	20x15	20x15	42 (1 5/8")	39 (1 7/32")	18 (11/16")	25 (1")	48 (1 57/64")	3.8Kgs
M5-70-256-2	White	20x15	20x15	42 (1 5/8")	39 (1 7/32")	18 (11/16")	25 (1")	48 (1 57/64")	3.8Kgs

MAGNETIC DOOR & WINDOW HOLDER - STAINLESS STEEL

- 316 Stainless Steel
- Base can be installed without removing ball.
- Encapsulated magnets for marine use.
- Rubber bumper is on ball.

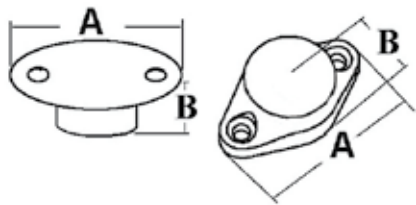
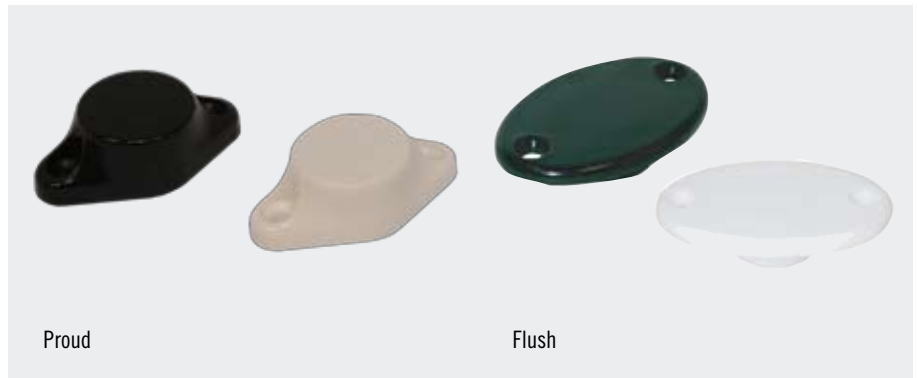


Part No	Mag. Size		A mm	B mm	C mm	D mm	E mm	Holding Power
	Ball	Strike						
M5-70-093-8	20x15	20x10	34 (1 5/16")	46 (1 7/8")	19 (3/4")	15 (9/16")	46 (1 7/8")	3.5Kgs

ACCESS HARDWARE

MAGNETIC DOOR HOLDER - NYLON

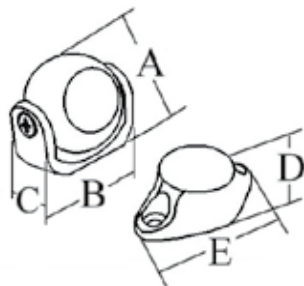
- Nylon
- Encapsulated magnets for marine applications
- Suitable for cabinets, transom doors and smaller doors
- Available with various holding power



Part No	Color	Mag.Size	A mm	B mm	Holding Power
M5-70-111-2	Black	Proud 20x10 Proud 20x10	46 (1 7/8")	15 (9/16")	2.5Kgs
M5-70-211-2	White	Proud 20x10 Proud 20x10	46 (1 7/8")	15 (9/16")	2.5Kgs
M5-70-120-2	Black	Proud 30x15 Proud 30x15	72 (2 7/8")	19 (3/4")	9Kgs
M5-70-222-2	White	Proud 30x15 Proud 30x15	72 (2 7/8")	19 (3/4")	9Kgs
M5-70-133-2	Black	Flush 20x10 Flush 20x10	62 (2 3/8")	10 (13/32")	2.5Kgs
M5-70-233-2	White	Flush 20x10 Flush 20x10	62 (2 3/8")	10 (13/32")	2.5Kgs
M5-70-144-2	Black	Flush 30x15 Flush 30x15	62 (2 3/8")	15 (9/16")	9Kgs
M5-70-244-2	White	Flush 30x15 Flush 30x15	62 (2 3/8")	15 (9/16")	9Kgs
M5-70-113-2	Black	Proud 20x10 Flush 20x10	46/62 (1 7/8" - 2 3/8")	15/10 (9/16" - 13/32")	2.5Kgs
M5-70-213-2	White	Proud 20x10 Flush 20x10	46/62 (1 7/8" - 2 3/8")	15/10 (9/16" - 13/32")	2.5Kgs
M5-70-124-2	Black	Proud 30x15 Flush 30x15	72/62 (2 7/8" - 2 3/8")	19(3/4")	9Kgs
M5-70-224-2	White	Proud 30x15 Flush 30x15	72/62 (2 7/8" - 2 3/8")	19(3/4")	9Kgs

MAGNETIC DOOR & WINDOW HOLDER - NO COMPASS AFFECT

- 316 stainless steel
- Encapsulated magnets for marine use
- Rubber bumper minimizes noise
- Steel encapsulated in Stainless steel on strike.

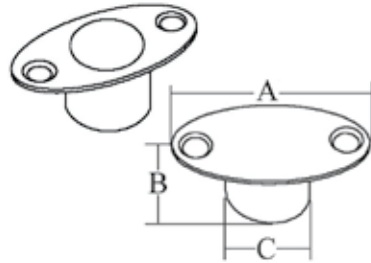


Part No	Ball	All steel strike	A mm	B mm	C mm	D mm	E mm	Holding Power
M5-99-122	Mag. 20x15	Proud 30x15	34 (1 5/8")	34 (1 5/8")	19 (3/4")	19 (3/4")	70 (2 7/8")	1.66Kgs

ACCESS HARDWARE

MAGNETIC DOOR HOLDER - DOUBLE STRIKE

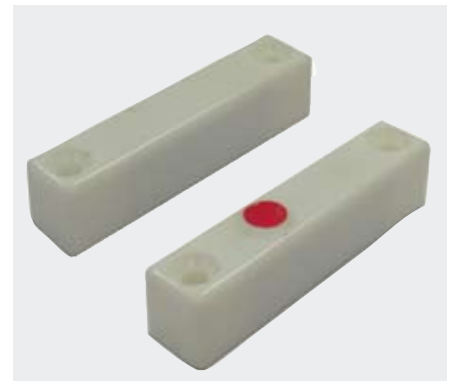
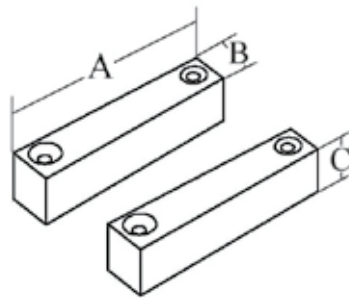
- 304 stainless steel
- Encapsulated magnets for marine use
- Rubber bumper minimizes noise



Part No	Model	Mag. Size	A mm	B mm	C mm	Holding Power
M5-70-344-6	W/Rubber	Flush 30x15 / Flush 30x15	58(2 5/16")	18(11/16")	21(13/16")	10.7Kgs
M5-70-3TT-6	W/Rubber	Flush 20x15 / Flush 20x15	50(1 15/16")	18(11/16")	21(13/16")	4.5Kgs
M5-70-333-6	W/Rubber	Flush 20x10 / Flush 20x10	50(1 15/16")	13(9/16")	21(13/16")	3.8Kgs
M5-70-044-6	W/O Rubber	Flush 30x15 / Flush 30x15	58(2 5/16")	18(11/16")	21(13/16")	10.7Kgs
M5-70-0TT-6	W/O Rubber	Flush 20x15 / Flush 20x15	50(1 15/16")	18(11/16")	21(13/16")	4.5Kgs
M5-70-033-6	W/O Rubber	Flush 20x10 / Flush 20x10	50(1 15/16")	13(9/16")	21(13/16")	3.8Kgs

MAGNETIC HATCH HOLDER

- Nylon
- Magnetic nylon blocks with easy installation
- Black also available

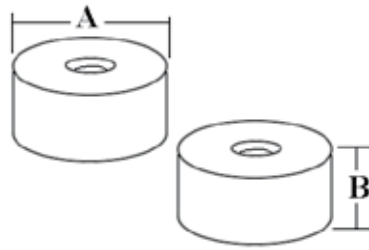


Part No	Mag. Size	A mm	B mm	C mm	Holding Power
M5-76-200-4	40x10x10	67(2-5/8")	14(5/8")	16(5/8")	3Kgs

ACCESS HARDWARE

CENTER MAGNETIC DOOR HOLDER

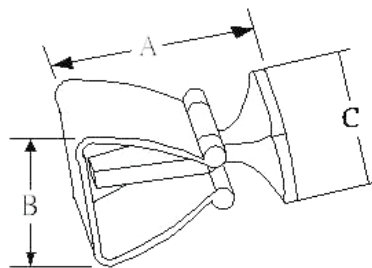
- Nylon
- Nylon coated magnet with center fastener
- Fasteners not included



Part No	Color	Mag. Size	A mm	B mm	Holding Power
M5-71-120-2	Black	30x15 / 30x15	37(1 1/2")	20(3/4")	9Kgs
M5-71-220-2	White	30x15 / 30x15	37(1 1/2")	20(3/4")	9Kgs
M5-71-12W-2	Black	30x15 / 30x10	37(1 1/2")	20(3/4") 15(5/8")	5Kgs
M5-71-22W-2	White	30x15 / 30x10	37(1 1/2")	20(3/4") 15(5/8")	5Kgs

DOOR HOLDER

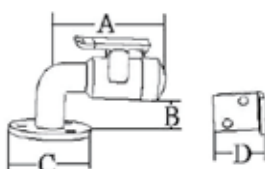
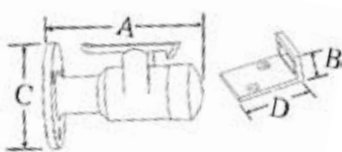
- 316 stainless steel
- Low friction spring stainless steel roller bearing style



Part No	A mm	B mm	C mm
M5-10-251-8	41(1 5/8")	35(1 3/8")	41(1 5/8")
M5-10-252-8	29(1 1/8")	20(3/4")	29(1 1/8")

DOOR STOP CATCH

- 316 stainless steel
- Rubber bumper stop to minimize noise



Part No	Model	A mm	B mm	C mm	D mm
M5-10-261-8	Horizontal	61 (2 1/2")	17 (11/16")	50 (2")	30 (1 3/16")
M5-10-262-8	Horizontal	85 (3 3/8")	17 (11/16")	50 (2")	30 (1 3/16")
M5-10-263-8	Vertical	49 (1 15/16")	29 (1 1/8")	50 (2")	30 (1 3/16")