

Southco® C2 Compression Latch Lever, Flush, Non-Locking

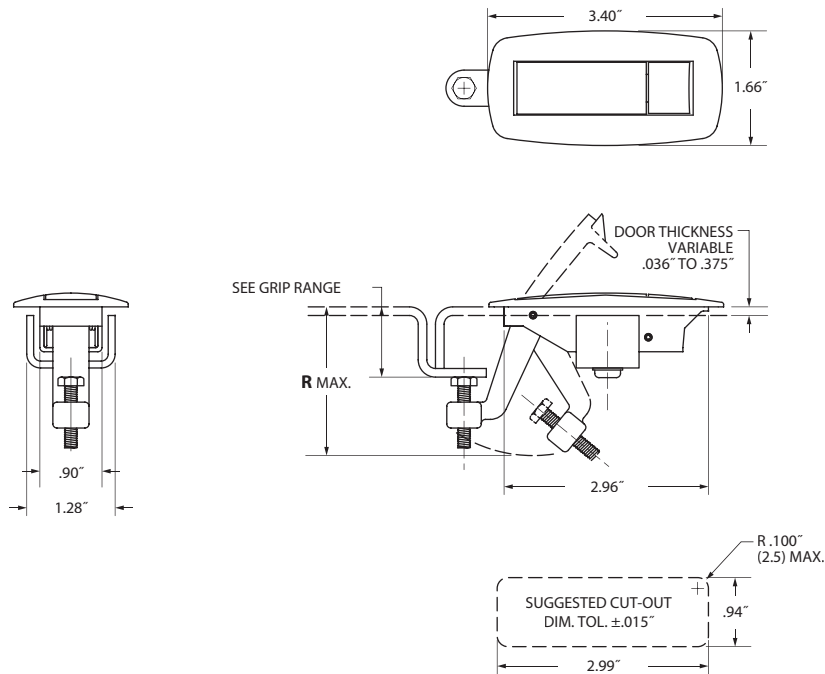
southco®



The 800 Series flush lever latch features snag-proof triggers and contemporary rounded, flush styling that blends to your enclosure. Standard finish black powder-coat and chrome. Custom colors in quantity. Applications range from electronics and machine control centers to office modules.

Benefits

- Quick access for serviceability.
- Large trigger for gloved operations.
- Rugged all-metal construction.
- Fail-safe double torsion spring.
- Designed to mount in metal, wood or plastic doors or panels.
- Bolt offsets accommodate a wide range of frame thicknesses.
- Self-locking adjustment screw designed into the bolt for variations in grip range.
- Latch installs with one self-tapping screw and mounting bracket (supplied).
- Maximum load 150 lbs.

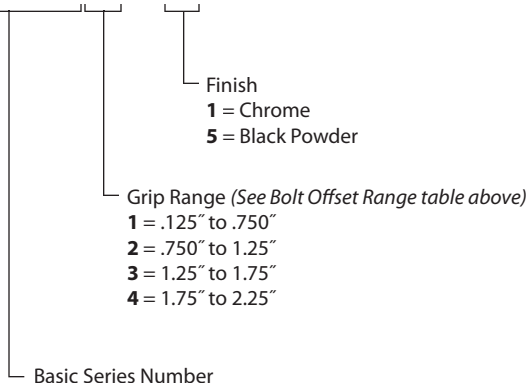


Grip Range

Grip Range	R Dim.	Part Number Code
.125" to .750"	1.81"	1
.750" to 1.25"	2.18"	2
1.25" to 1.75"	2.60"	3
1.75" to 2.25"	3.05"	4

Part Numbers

C2-80X-3Z



All dimensions on this page are in inches.

Southco® C2 Compression Latch Lever, Flush, Locking

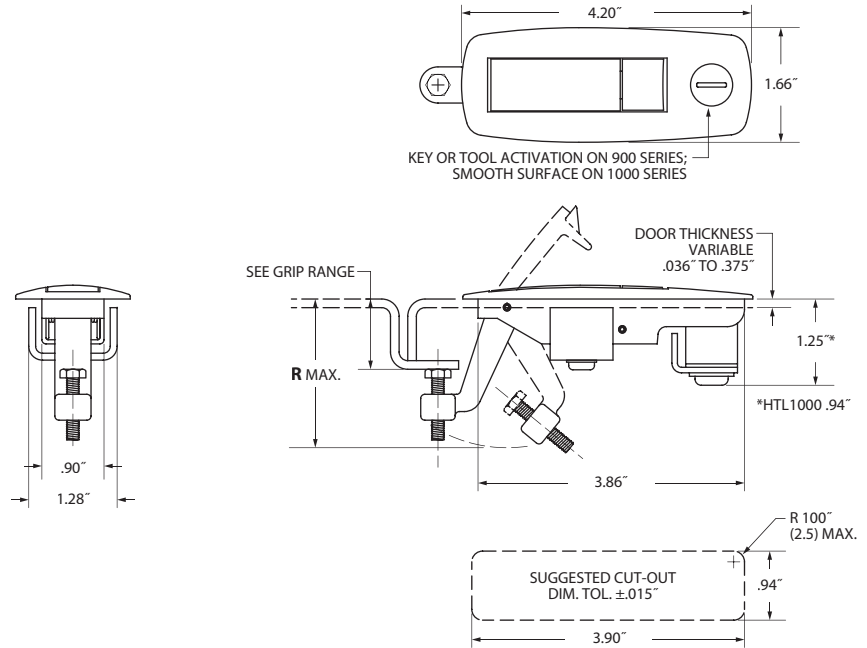
southco®



The 900 & 1000 Series flush lever latches feature snag-proof triggers and contemporary rounded, flush styling that blends to your enclosure. Standard finish black powder-coat and chrome. Custom colors in quantity. Applications range from electronics and machine control centers to office modules. You will find extra security with the key-lockable 900 series. The 1000 comes without a lock but takes the same cutout.

Benefits

- Quick access for serviceability.
- Large trigger for gloved operations.
- Rugged all-metal construction.
- Fail-safe double torsion spring.
- Designed to mount in metal, wood or plastic doors or panels.
- Bolt offsets accommodate a wide range of frame thicknesses.
- Self-locking adjustment screw designed into the bolt for variations in grip range.
- Latch installs with one self-tapping screw and mounting bracket (supplied).
- Maximum load 150 lbs.



Grip Range

Grip Range	R Dim.	Part Number Code
.125" to .750"	1.81"	1
.750" to 1.25"	2.18"	2
1.25" to 1.75"	2.60"	3
1.75" to 2.25"	3.05"	4

Part Numbers

C2-100X-1Z
C2-90X-2Z-KK

Key Code*
01-10

Finish
1 = Chrome
5 = Black

Part Number Code (See Grip Range table above)
1 = .125" to .750"
2 = .750" to 1.25"
3 = 1.25" to 1.75"
4 = 1.75" to 2.25"

Basic Series Number
900 Series - Key or Tool Activated
1000 Series - Non-Locking to Match 900 Series

Note:

* 2 keys on a ring supplied with locking version, keyed alike, WN01 - WN10 key codes. For additional key codes, contact Southco.

All dimensions on this page are in inches.

Southco® C2 Compression Latch Lever, Semi-Flush, Heavy Duty

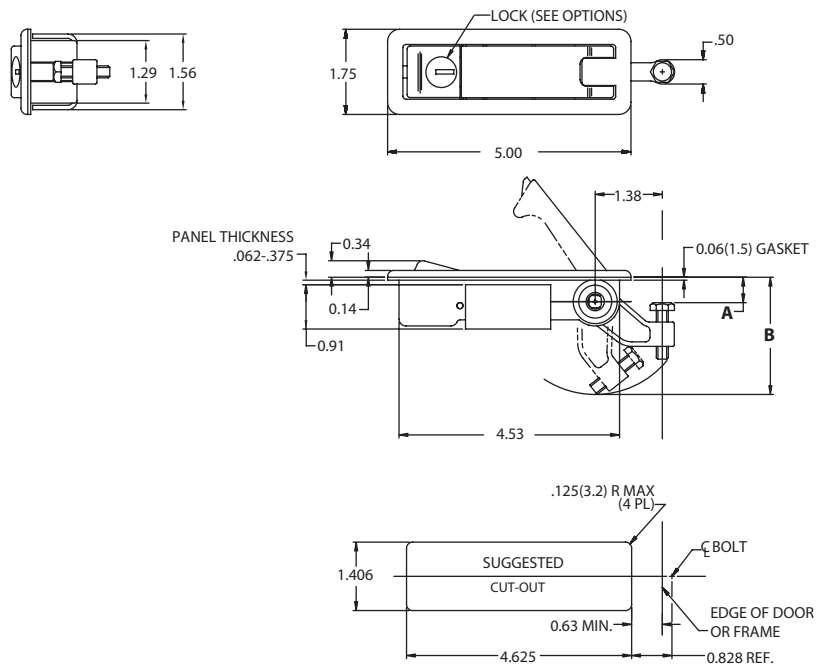
southco®



The semi-flush heavy-duty 100 series lever latch is the largest of the C2 series. Applications range from utility truck access panels to enclosures and industrial machinery.

Benefits

- Rugged, all metal casting.
- Low installation cost.
- Installs with two self-tapping screws and mounting brackets (supplied).
- Maximum load over bolt: 300 lbs.
- Bolt offsets accommodate a wide range of frame thicknesses.
- Unique self-locking adjustment screw on the bolt face allows for variation in grip range.
- Meets MIL-STD-810E requirements for salt spray test.
- Key lockable option.
- Available with chrome plating.
- Available with stainless steel hardware and spring (consult factory).

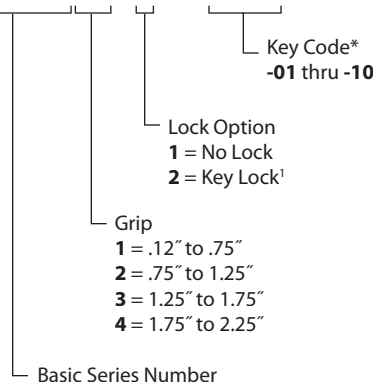


Grip Range

Dimension A Grip Range	Dimension B R Maximum	Part Number Code ¹
.12" to .75"	2.54"	1
.75" to 1.25"	2.89"	2
1.25" to 1.75"	3.31"	3
1.75" to 2.25"	3.72"	4

Part Numbers

C2-10X-Y1-KK



Note:

* 2 keys on a ring supplied with locking version, keyed alike, WN01 - WN10 key codes. For additional key codes, contact Southco.

All dimensions on this page are in inches.