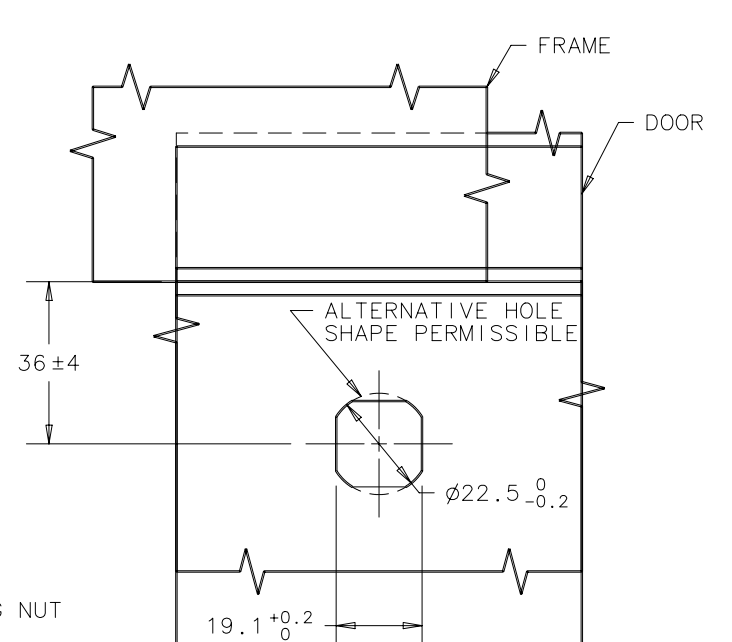
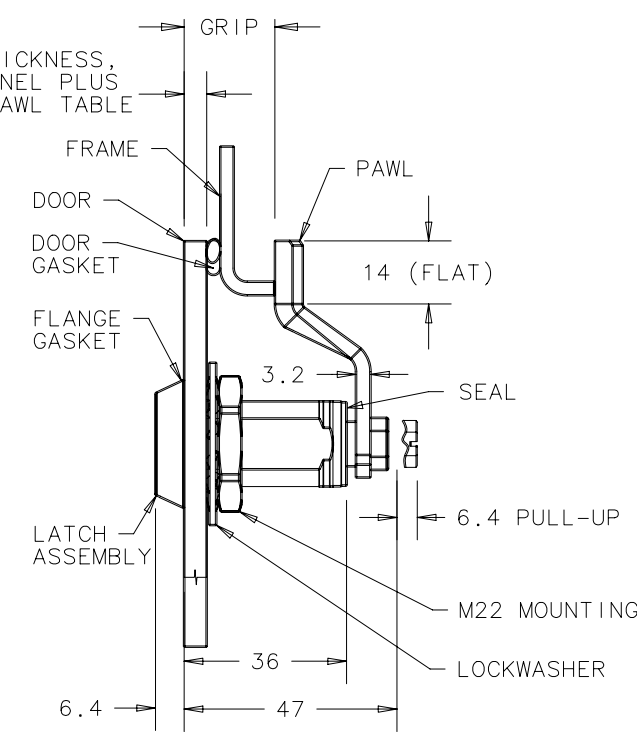
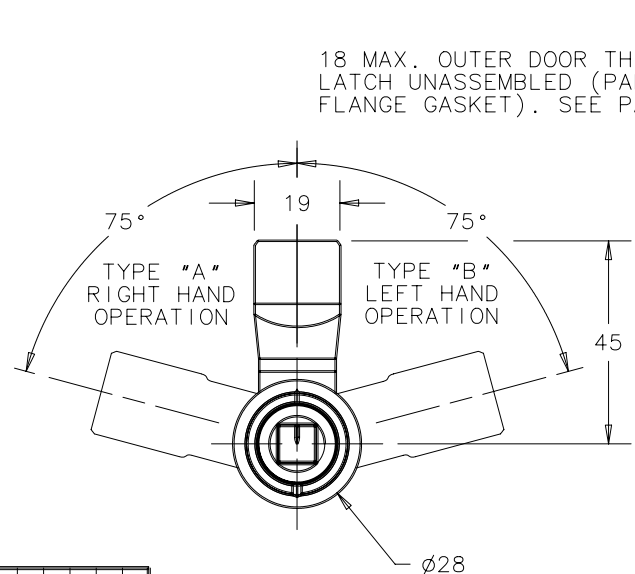


REV	DATE	DESCRIPTION	COMPONENT	MATERIAL	FINISH
I	03FEB2009	MJS/JSS PRN: P2009-0118	HOUSING	316 STAINLESS STEEL	PASSIVATED
J	30JUL2010	MJS PRN: P2010-0806	CAP	316 STAINLESS STEEL	PASSIVATED
K	17FEB2011	MJS PRN: P2011-0204	BUSHING	316 STAINLESS STEEL	PASSIVATED
L	08JUL2011	MJS PRN: P2011-0424	RETAINER	302 STAINLESS STEEL	NATURAL
			SPRING	302 STAINLESS STEEL	PASSIVATED
			O-RING	BUNA-N	NATURAL
			SLEEVE	304 STAINLESS STEEL	PASSIVATED
			CAM	1075 STEEL	ZINC IMMERSION COATING
			SHAFT	316 STAINLESS STEEL	PASSIVATED
			PIN	1008 STEEL	ZINC PLATE PLUS PASSIVATED
			PAWL	304 STAINLESS STEEL	PASSIVATED
			SCREW	316 STAINLESS STEEL	PASSIVATED
			LOCKWASHER	316 STAINLESS STEEL	PASSIVATED
			MOUNTING NUT	STAINLESS STEEL	NATURAL
			GASKET SEAL	NEOPRENE	NATURAL
			SEAL	BUNA-N	NATURAL

REV	DATE	DESCRIPTION	COMPONENT	MATERIAL	FINISH
			HOUSING	316 STAINLESS STEEL	PASSIVATED
			CAP	316 STAINLESS STEEL	PASSIVATED
			BUSHING	316 STAINLESS STEEL	PASSIVATED
			RETAINER	302 STAINLESS STEEL	NATURAL
			SPRING	302 STAINLESS STEEL	PASSIVATED
			O-RING	BUNA-N	NATURAL
			SLEEVE	304 STAINLESS STEEL	PASSIVATED
			CAM	1075 STEEL	ZINC IMMERSION COATING
			SHAFT	316 STAINLESS STEEL	PASSIVATED
			PIN	1008 STEEL	ZINC PLATE PLUS PASSIVATED
			PAWL	304 STAINLESS STEEL	PASSIVATED
			SCREW	316 STAINLESS STEEL	PASSIVATED
			LOCKWASHER	316 STAINLESS STEEL	PASSIVATED
			MOUNTING NUT	STAINLESS STEEL	NATURAL
			GASKET SEAL	NEOPRENE	NATURAL
			SEAL	BUNA-N	NATURAL



DOOR PREPARATION

DRAWING NUMBER
J-E3-10-2

ASSEMBLY PART NUMBER

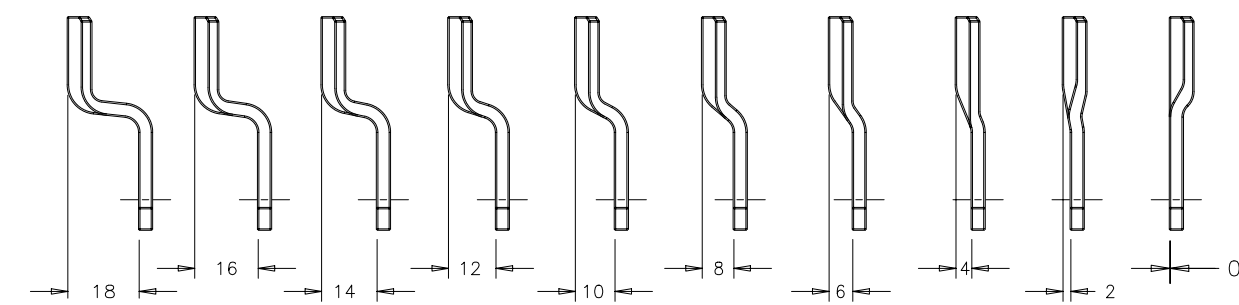
E3 - WW X - YY 0

MOUNTING STYLE
DRIVE STYLE
PAWL STYLE

- MOUNTING STYLE:
- 10 - LATCH SHIPPED ASSEMBLED, TYPE A (TURN CLOCKWISE TO LATCH)
 - 12 - LATCH SHIPPED UNASSEMBLED, TYPE A (TURN CLOCKWISE TO LATCH)
 - 27 - LATCH SHIPPED ASSEMBLED, TYPE B (TURN COUNTERCLOCKWISE TO LATCH)
 - 29 - LATCH SHIPPED UNASSEMBLED, TYPE B (TURN COUNTERCLOCKWISE TO LATCH)

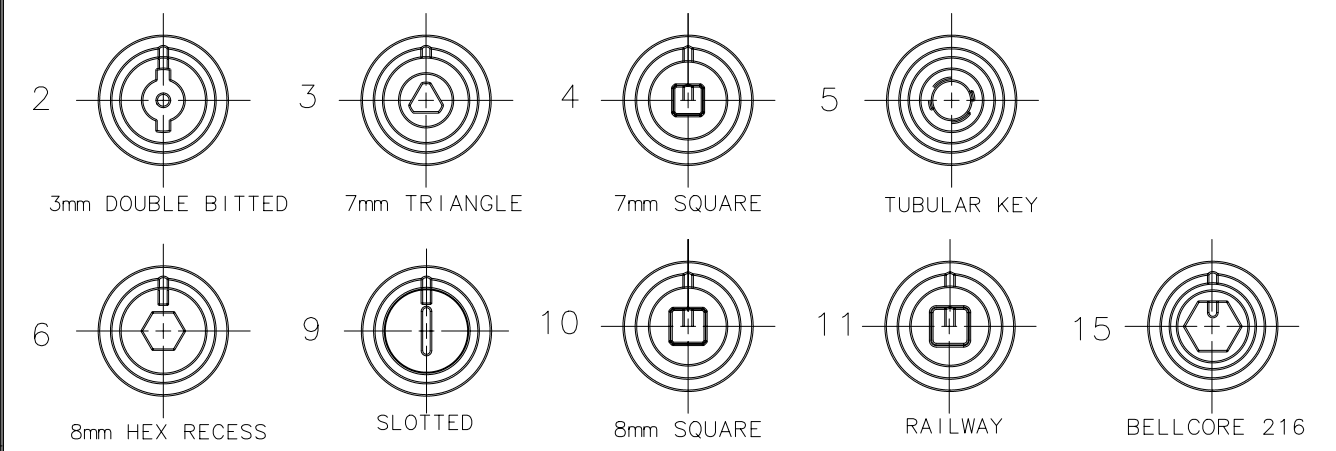
NOTES

- OPERATION: 195° TURN OF DRIVER CAUSES PAWL TO ROTATE AND PULL UP AS SHOWN.
- DETERMINE TOTAL GRIP BY ADDING: MAX. OUTER DOOR THICKNESS (INCLUDE ALL ACCESSORIES) PLUS COMPRESSED FRAME GASKET AND FRAME THICKNESS.
- FIND YOUR TOTAL GRIP IN PAWL TABLE AND DETERMINE IF AN ASSEMBLED OR UNASSEMBLED LATCH IS TO BE USED BASED ON OUTER DOOR THK.
- INSTALLATION:
 - INSERT LATCH INTO HOLE IN DOOR, IN THE UNLATCHED POSITION. CHECK FOR PROPER ORIENTATION AND OPERATION OF PAWL.
 - RECOMMENDED MOUNTING NUT (27mm ACROSS FLATS) TIGHTENING TORQUE IS 20Nm AND PAWL MOUNTING SCREW IS 10Nm.



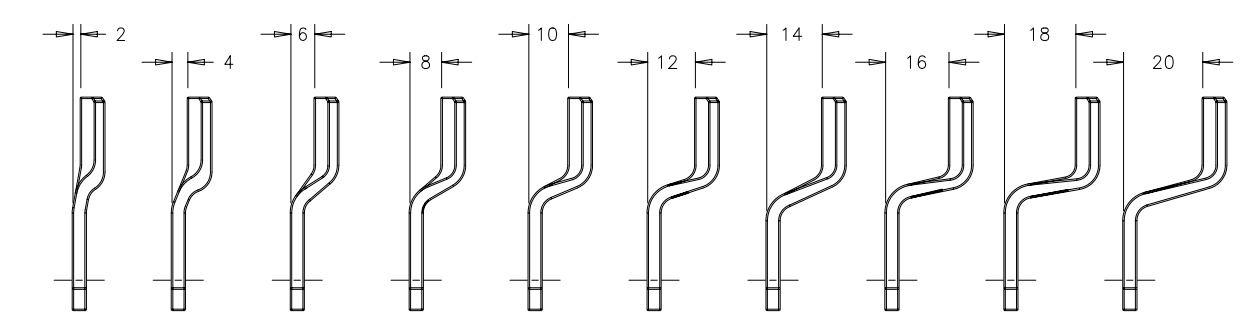
TOTAL GRIP	20	22	24	26	28	30	32	34	36	38
MAX. OUTER DOOR THICKNESS (LATCH ASSEMBLED)	1	2	4	5	6	7	7	7	7	7
PAWL STYLE (YY)	00	01	02	03	04	05	06	07	08	09

DRIVER (X)



DRIVER	KEY PART NUMBER
3mm DOUBLE-BIT	E3-2-1
7mm TRIANGLE	E3-3-1
7mm SQUARE RECESS	E3-4-1
TUBULAR KEY	E3-5-15
8mm HEX RECESS	NOT SUPPLIED BY SOUTHCO
8mm RAILWAY	NOT SUPPLIED BY SOUTHCO
BELLCORE 216	E3-12-1
3mm SLOTTED RECESS	NOT SUPPLIED BY SOUTHCO

KEYS TO BE ORDERED SEPARATELY



TOTAL GRIP	40	42	44	46	48	50	52	54	56	58
MAX. OUTER DOOR THICKNESS (LATCH ASSEMBLED)	7	7	7	7	7	7	7	7	7	7
PAWL STYLE (YY)	10	11	12	13	14	15	16	17	18	19