

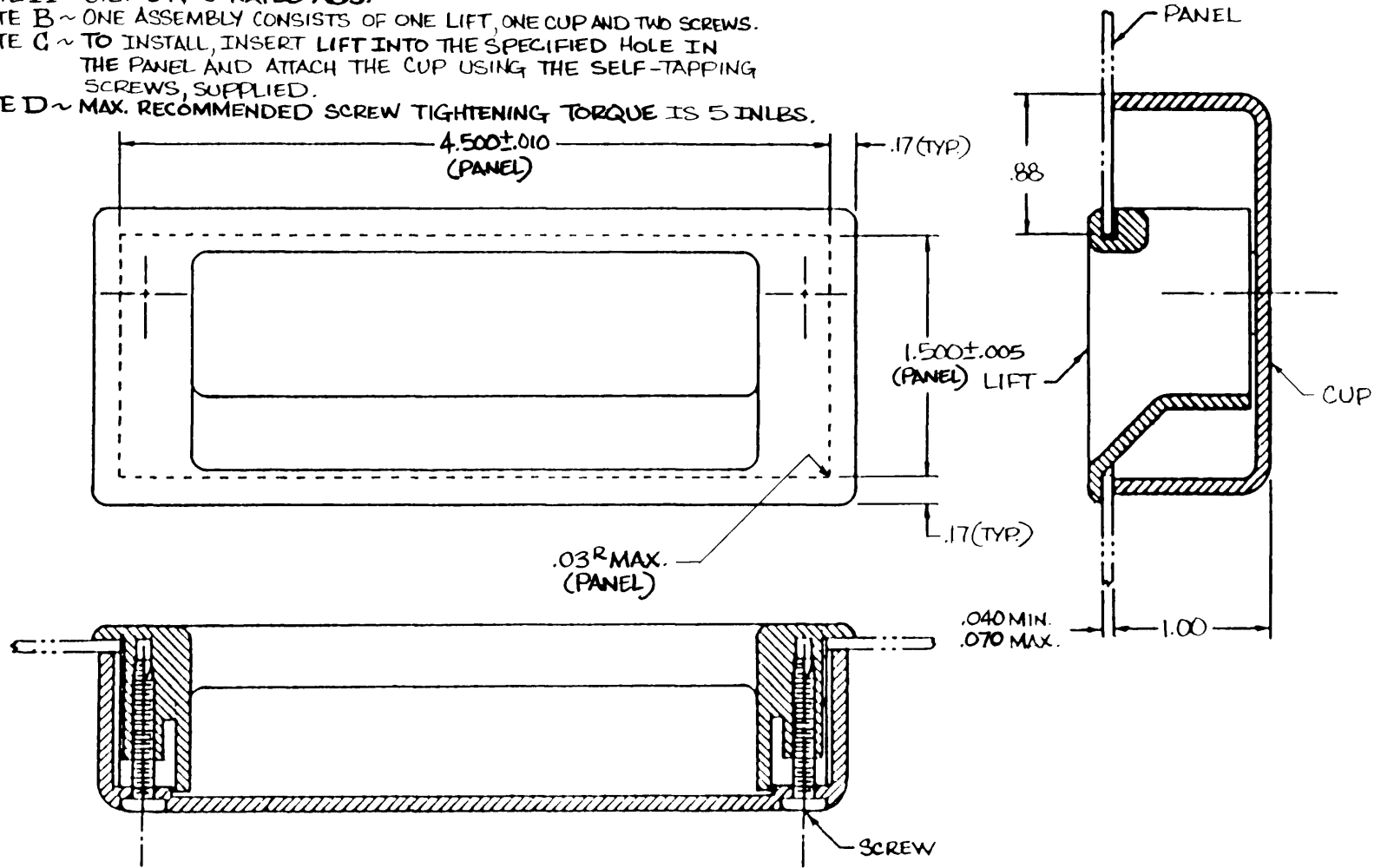


No P1 FLUSH LIFT ASSEMBLY

DATE	DRAWN	CHKD	SCALE	DRAWING NUMBER
11-29-89	JSS		N.T.S.	J - P1 - 31

REV. LET.	DATE	BY/CHKD	REVISIONS	ITEM	PART NO.	MATERIAL	FINISH
A	2-8-90	PKS	PRN: PI-5	ASSEMBLY	PI-31	—	—
B	9-7-90	PKE	PRN: PI-6	LIFT	—	SEE NOTE A	BLACK
C	10-7-91	PKS	ADDED TOL'S. TO PANEL DIM'S.	CUP	—	SEE NOTE A	BLACK
D	12JAN93	JC	PRN: S - 1 - 03	SCREW (2)	—	STEEL	ZINC PLATE, BRIGHT

- NOTE A ~ U.L. - 94V-0 RATED ABS.
- NOTE B ~ ONE ASSEMBLY CONSISTS OF ONE LIFT, ONE CUP AND TWO SCREWS.
- NOTE C ~ TO INSTALL, INSERT LIFT INTO THE SPECIFIED HOLE IN THE PANEL AND ATTACH THE CUP USING THE SELF-TAPPING SCREWS, SUPPLIED.
- NOTE D ~ MAX. RECOMMENDED SCREW TIGHTENING TORQUE IS 5 INLBS.



SCALE: MILLIMETER/INCH

PROPRIETARY ITEM - EXCEPT FOR USES EXPRESSLY GRANTED IN WRITING, INFORMATION DISCLOSED HEREON IS CONFIDENTIAL AND ALL RIGHTS, PATENT AND OTHERWISE, ARE RESERVED BY SOUTHCO, INC.

PAT. 4,744,126

ALL DIMENSIONS IN INCHES

DRAWING NUMBER
J - P1 - 31