

NOTES:

- A. THREAD SIZE OF SHAFT IS M8 AND THE SCREW/ LOCKWASHER ASSEMBLY IS M5.
- B. THICKER PANELS REQUIRE A LONGER SCREW/ LOCKWASHER COMBINATION (NOT SUPPLIED).
- C. ASSEMBLE AS SHOWN AND ROTATE PAWL TO THE DESIRED LATCHING POSITION.
- D. PAWL SHOULD BE ADJUSTED TO GRIP MEASURE- MENT WITH THE DOOR OPEN AND THE LEVER IN THE LATCHED POSITION. USE TWO WRENCHES TO TIGHTEN JAM NUTS.
- E. FOR MOST EFFECTIVE ENVIRONMENTAL SEALING, USE A CUP GASKET AND SEAL THE MOUNTING SCREW THREADS.
- F. MATERIAL AND FINISH:
 - 1. BASIC LEVER AND HOUSING: DIE CAST ZINC, SEE TABLE.
 - 2. SHAFT: STEEL, ZINC ALLOY PLATE BRIGHT CHROMATE, PLUS SEALER OR WITH BLACK ORGANIC COATING.
 - 3. SHAFT O-RING: SYNTHETIC RUBBER, NATURAL.
 - 4. CAM: 1010 STEEL, ZINC ALLOY PLATE BRIGHT CHROMATE, PLUS SEALER OR WITH BLACK ORGANIC COATING.
 - 5. PIN: 303 STAINLESS STEEL, PASSIVATED.
 - 6. WASHER: 1010 STEEL, ZINC PLATED BRIGHT OR BLACK OXIDE.
 - 7. SPRINGS: 302 STAINLESS STEEL, PASSIVATED.
 - 8. BEARING WASHER, PAWL, PAWL RETAINING CLIP & BRACKET: 1010 STEEL, ZINC ALLOY PLATE BRIGHT CHROMATE, PLUS SEALER.
 - 9. LOCKWASHER: SPRING STEEL, ZINC ALLOY PLATE BRIGHT CHROMATE, PLUS SEALER.
 - 10. NUTS AND SCREW/LOCKWASHER ASSEMBLY: LOW CARBON STEEL, ZINC ALLOY PLATE BRIGHT CHROMATE, PLUS SEALER.
 - 11. CUP GASKET: SYNTHETIC RUBBER, NATURAL.
 - 12. LOCK PLUG: DIE CAST ZINC, (SEE TABLE).
 - 13. LOCK PLATE: STAINLESS STEEL, BLACK OXIDE OR PASSIVATED.
 - 14. KEYS: BRASS, NICKEL PLATED.
- G. FOR ASSEMBLIES WITHOUT LOCKPLUG, ADD A *1* AFTER THE FOURTH DIGIT OF THE PART NUMBER. EXAMPLE: 62-421-101-3

southco

PROPRIETARY ITEM - EXCEPT FOR USES EXPRESSLY GRANTED IN WRITING INFORMATION DISCLOSED HEREON IS CONFIDENTIAL AND ALL RIGHTS PATENT AND OTHERWISE ARE RESERVED BY SOUTHCO, INC.

No. 62 42-SERIES
LOCKING LATCH ASSEMBLY

DATE: 08JUN94
DRAWN/CHKD: BMC
SCALE: 1:1

DRAWING NUMBER: J-62-46

REV	DATE	DRAWN/CHKD	DESCRIPTION
F	11AUG2004	VNI/RLR	PRN: P2004-0893
G	07OCT2004	MJR/MDY	PRN: P2004-1144
H	09NOV2004	MDY/RLR	PRN: P2004-1308
I	18JAN2012	CMS/JCK	PRN: P2012-0085
J	14JAN2013	MJS/MSR	PRN: P2013-0122
K	08MAY2014	CMS/CDW	PRN: P2014-0904

GRIP RANGE		INDIVIDUALLY PACKAGED ASSEMBLY PART NUMBER				
MIN-MAX	MIN-MAX	TEXTURED CHROME	POLISHED CHROME	WHITE POWDER COATED	BLACK POWDER COATED	SILVER METALLIC POLYESTER URETHANE POWDER COATED
6 - 16	56 - 66	62-42-101-2	62-42-111-2	62-42-141-2	62-42-151-2	62-42-161-2
16 - 26	46 - 56	62-42-201-2	62-42-211-2	62-42-241-2	62-42-251-2	62-42-261-2
26 - 36	36 - 46	62-42-301-2	62-42-311-2	62-42-341-2	62-42-351-2	62-42-361-2

GRIP RANGE		BULK LAYER PACKED ASSEMBLY PART NUMBER				
MIN-MAX	MIN-MAX	TEXTURED CHROME	POLISHED CHROME	WHITE POWDER COATED	BLACK POWDER COATED	SILVER METALLIC POLYESTER URETHANE POWDER COATED
6 - 16	56 - 66	62-42-101-3	62-42-111-3	62-42-141-3	62-42-151-3	62-42-161-3
16 - 26	46 - 56	62-42-201-3	62-42-211-3	62-42-241-3	62-42-251-3	62-42-261-3
26 - 36	36 - 46	62-42-301-3	62-42-311-3	62-42-341-3	62-42-351-3	62-42-361-3

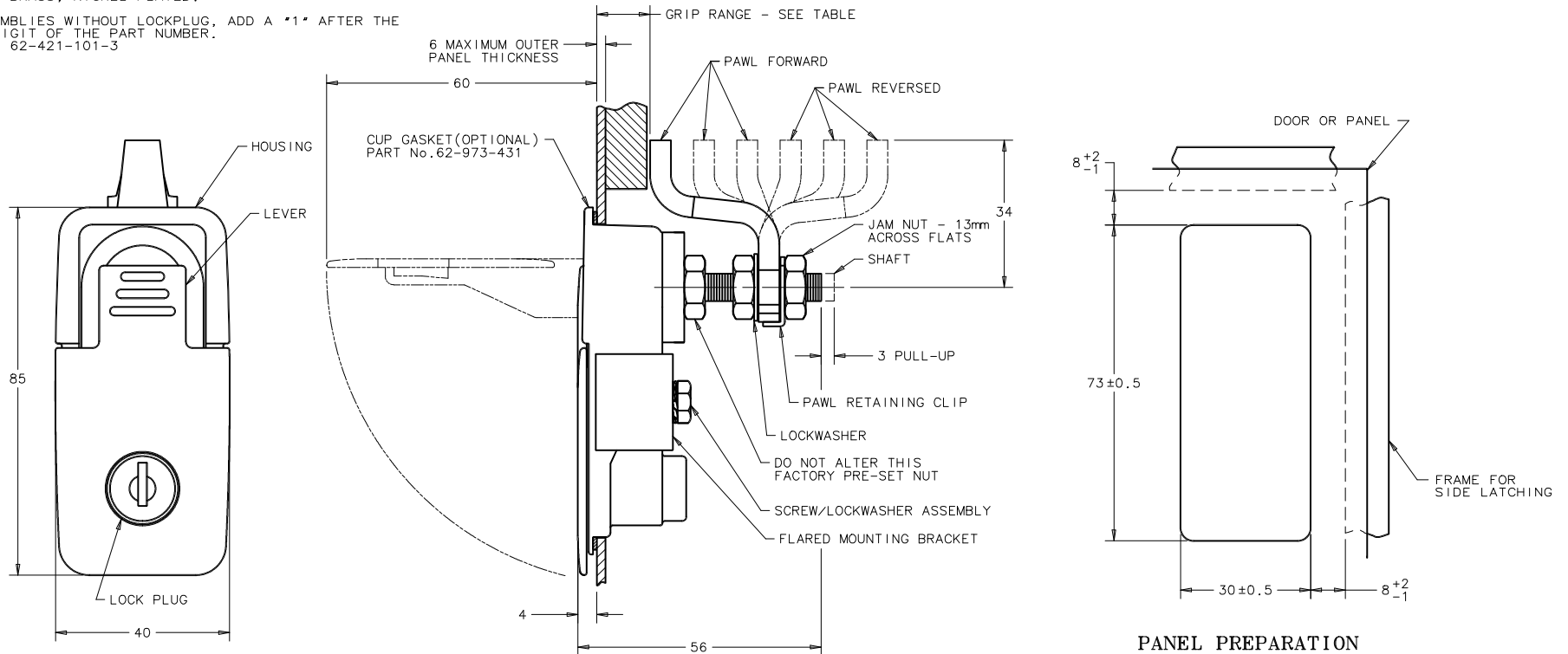
MILLIMETERS

ALL DIMENSIONS WITHOUT TOLERANCES ARE FOR REFERENCE ONLY.



H. LOCKPLUG INSTALLATION:

1. LIFT THE LEVER OF THE LATCH.
2. SLIDE LOCKPLATE OVER THE LOCKPLUG UNTIL IT SEATS AGAINST THE HEAD OF THE LOCK. NOTE THAT THE TAB PORTION OF THE LOCKPLATE SHOULD SHOW THE WORD "TOP" AGAINST THE HEAD.
3. POSITION LOCKPLUG AND ORIENT RETAINING WAFER (LAST WAFER LOCATED AT THE BOTTOM OF LOCK) AT THE 6 O'CLOCK POSITION AND INSERT INTO HOUSING.
4. BE SURE THE LOCKPLUG IS FULLY SEATED AGAINST HOUSING, THEN REMOVE KEY.



PANEL PREPARATION