

POSITION NUMBER	ROTATION	PIN POSITION
1	0°	
2	45°	
3	90°	
4	135°	
5	180°	
6	225°	
7	270°	
8	315°	

southco				PROPRIETARY ITEM - EXCEPT FOR USES EXPRESSLY GRANTED IN WRITING INFORMATION DISCLOSED HEREON IS CONFIDENTIAL AND ALL RIGHTS PATENT AND OTHERWISE ARE RESERVED BY SOUTHCO, INC.
REV	DATE	DRAWN/CHKD	DESCRIPTION	
A	22MAR2007	DLH	RELEASED FOR PRODUCTION	
B	20AUG2007	DLH/DLH	PRN: P2007-1073	

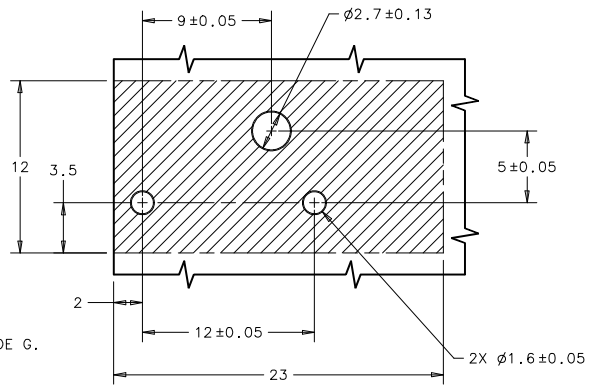
ALIGNMENT KEYING MODULE - (A2)
ATCA - REAR TRANSITION MODULE

DATE	DRAWN	CHKD	SCALE	DRAWING NUMBER
14OCT2006	DLH		3:1	J-CN-80

MILLIMETERS
ALL DIMENSIONS WITHOUT TOLERANCES ARE FOR REFERENCE ONLY.

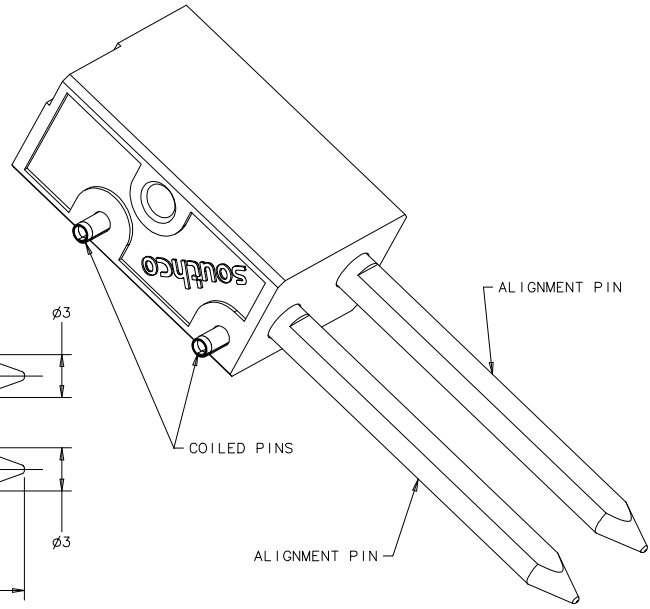
THIRD ANGLE PROJECTION A3 PAPER SIZE

PART NUMBER: CN-80- X - Y

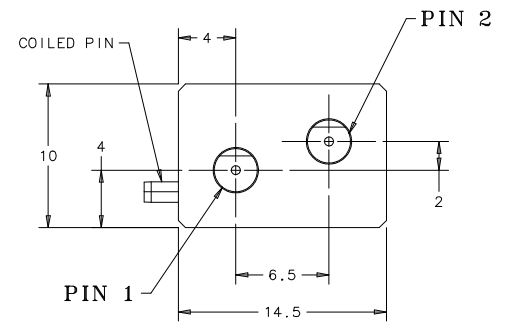
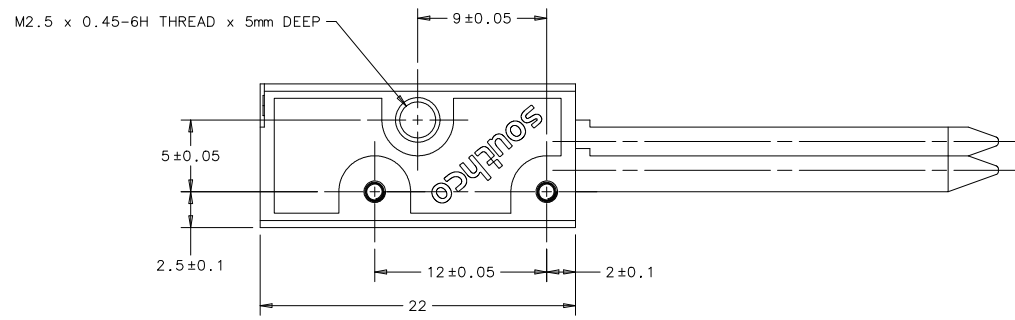
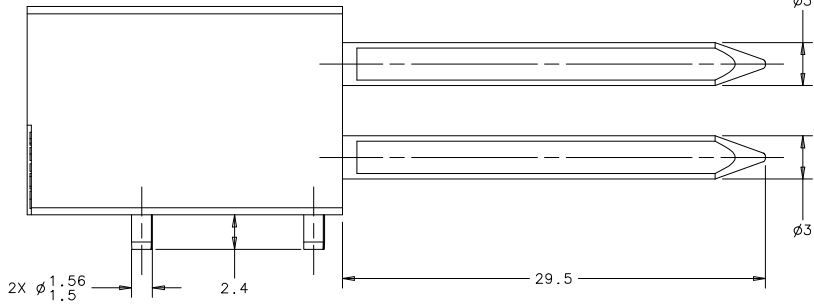


PCB PREPARATION

PIN 1 POSITION NUMBER (SEE TABLE)
PIN 2 POSITION NUMBER (SEE TABLE)



- NOTES:
- A. MATERIAL AND FINISH:
BASE - DIE CAST ZINC, NICKEL PLATE PER SAE-AMS QQ-N-290 CLASS 1 GRADE G.
ALIGNMENT PIN - HARDENED STEEL, NICKEL PLATE PER SAE-AMS QQ-N-290 CLASS 1 GRADE G.
COILED PIN - STAINLESS STEEL, PLAIN OILED
 - B. KEYING MODULE CONFORMS TO: AdvancedTCA® PICMG® 3.0 Revision 2.0
AdvancedTCA® Base Specification (March 18, 2005)
 - C. COSMETIC SPECIFICATION:
ALL SURFACES UNLESS OTHERWISE NOTED ARE TO CONFORM TO A CLASS *C* DESIGNATION AS DESCRIBED IN SOUTHCO COSMETIC SPECIFICATION: S-121-02 FOR ZINC PLATING
 - D. RoHS COMPLIANT.
 - E. PACKAGED IN TRAYS OF 35.
 - F. PICMG AND THE PICMG LOGO ARE REGISTERED TRADEMARKS OF THE PCI INDUSTRIAL COMPUTERS MANUFACTURERS GROUP.
 - G. AdvancedTCA, ATCA AND THE AdvancedTCA AND ATCA LOGOS ARE TRADEMARKS OF THE PCI INDUSTRIAL COMPUTERS MANUFACTURERS GROUP.
 - H. CN-80-X-Y MATES WITH SOUTHCO PART NUMBER CN-69-X-Y.
(Ex. CN-80-1-1 WILL MATE WITH SOUTHCO PART NUMBER CN-69-1-1)
(Ex. CN-80-6-2 WILL MATE WITH SOUTHCO PART NUMBER CN-69-6-2)



PART NUMBER: CN-80-1-1 SHOWN