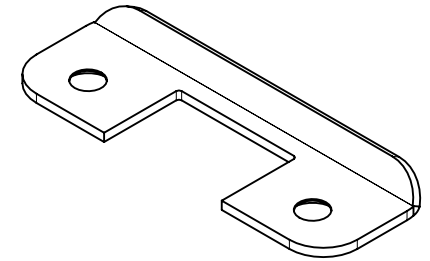
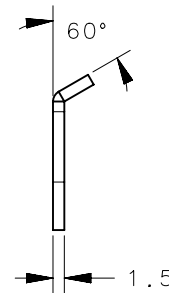
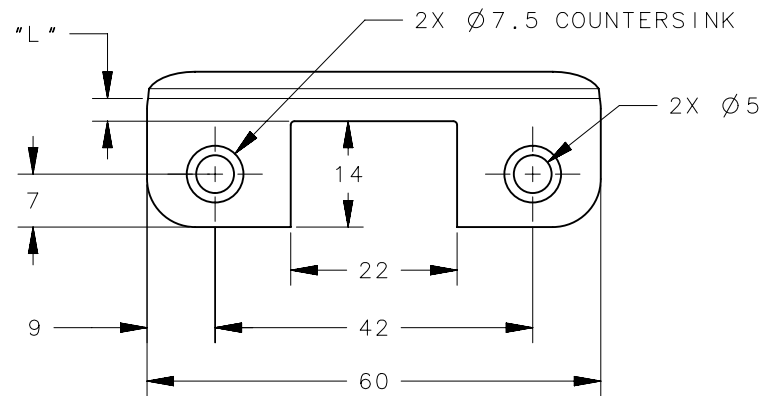
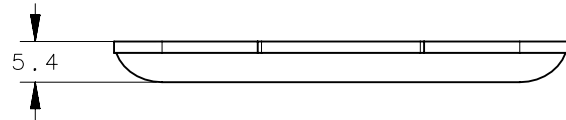


REVISION HISTORY			
REV	DATE	BY	DESCRIPTION
B	08MAY2018	CMS/MWD	PRN: P2018-0464



SCALE 1:1



MC-90-303-10	STRIKER	3	BRASS	NICKEL PLATED
MC-90-305-10	STRIKER	5	BRASS	NICKEL PLATED
MC-90-307-10	STRIKER	7	BRASS	NICKEL PLATED
MC-90-309-10	STRIKER	9	BRASS	NICKEL PLATED
MC-90-313-10	STRIKER	13	BRASS	NICKEL PLATED
MC-90-316-10	STRIKER	16	BRASS	NICKEL PLATED
MC-90-321-10	STRIKER	21	BRASS	NICKEL PLATED
PART NUMBER	TYPE OF COMPONENT	"L"	MATERIAL	FINISH

THIRD ANGLE PROJECTION		 CONNECT • CREATE • INNOVATE		
MILLIMETERS [IN]				
TOLERANCES UNLESS OTHERWISE NOTED		DESCRIPTION		
ALL DIMENSIONS WITHOUT TOLERANCES ARE FOR REFERENCE ONLY.		STRIKER NO BIN		
PROPRIETARY ITEM <small>EXCEPT FOR USES EXPRESSLY GRANTED IN WRITING, INFORMATION DISCLOSED HEREON IS CONFIDENTIAL AND ALL RIGHTS, PATENT AND OTHERWISE, ARE RESERVED BY SOUTHCO, INC.</small>		SIZE A4	SYSTEM NX	DWG NO. J-MC-90-3
PER ASME Y14.5M-1994		DRAWN BY VK/YGC	DATE 05JUN2015	SCALE 1:1 SHEET 1 OF 1