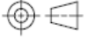
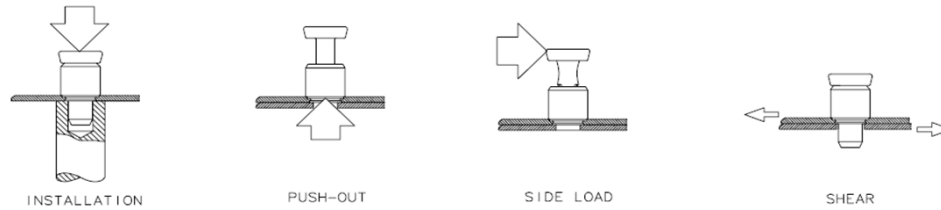
 <small>CONNECT · CREATE · INNOVATE</small>			PROPRIETARY ITEM - EXCEPT FOR USES EXPRESSLY GRANTED IN WRITING INFORMATION DISCLOSED HEREON IS CONFIDENTIAL AND ALL RIGHTS PATENT AND OTHERWISE ARE RESERVED BY SOUTHCO, INC.			56 SPRING LOADED PLUNGER ASSEMBLY, MINIATURE, PRESS-IN			DATE	DRAWN	CHKD	SCALE	DRAWING NUMBER
									16-Sep-14	TVA	SP	NTS	TD-56-1X-J
REV.	DATE	DRAWN	REVISION										
A	26-Sep-14	TVA/ MJS	PRN: P2014-1925									THIRD ANGLE PROJECTION 	
A4 PAPER SIZE													

SOUTHCO PERFORMANCE GUIDELINES

THE PERFORMANCE GUIDELINES SHOWN ON THIS PAGE ARE SUPPLIED AS A GENERAL GUIDE ONLY, AS CONDITIONS VARY WITH EACH APPLICATION AND METHOD OF INSTALLATION. STRENGTH DATA GIVEN IS FOR FAILURE OF THE PRODUCT OR FOR SUFFICIENT DEFORMATION TO MAKE THE PRODUCT INOPERABLE. NO SAFETY FACTOR HAS BEEN APPLIED. IT IS RECOMMENDED THAT THE USER REQUEST A PRODUCT SAMPLE FOR TESTING TO DETERMINE THE SUITABILITY OF THE PRODUCT FOR THE PURPOSE INTENDED AND USER'S PARTICULAR APPLICATION.



ASSEMBLY PART NUMBERS	PANEL MATERIAL	INSTALLATION FORCE N (lbf)	MINIMUM PUSH-OUT FORCE N (lbf) ^(A)	MINIMUM SIDE-LOAD FORCE N (lbf) ^(A)	MINIMUM ULTIMATE SHEAR LOAD N (lbf) ^(B)
56-1X-XX	(1)	5000 (1124)	547 (122)	135 (30)	N/A
	(2)	8000 (1798)	571 (128)	164 (37)	N/A
	(3)	N/A	N/A	N/A	1042 (234)

1. ASSEMBLIES WERE INSTALLED AND TESTED IN 0.8 mm (.031 in) NOMINAL THICK ALUMINUM 5052-H32 PANELS
2. ASSEMBLIES WERE INSTALLED AND TESTED IN 0.8 mm (.031 in) NOMINAL THICK COLD ROLLED STEEL PANELS (MAXIMUM Rb55)
3. ASSEMBLIES WERE INSTALLED AND TESTED IN 0.8 mm (.031 in) NOMINAL THICK COLD ROLLED STEEL PANELS (MAXIMUM Rb70)

FAILURE MODES OBSERVED IN TESTING:

- A. FAILURE OCCURED IN THE ASSEMBLY PUSHING OUT OF THE PANEL
- B. FAILURE OCCOURED IN THE ASSEMBLY PUSHING OUT OF THE PANEL, EXCESSIVE PANEL DEFORMATION OR CAP AND STUD DAMAGE

REF: TR56-18382, TR56-18385